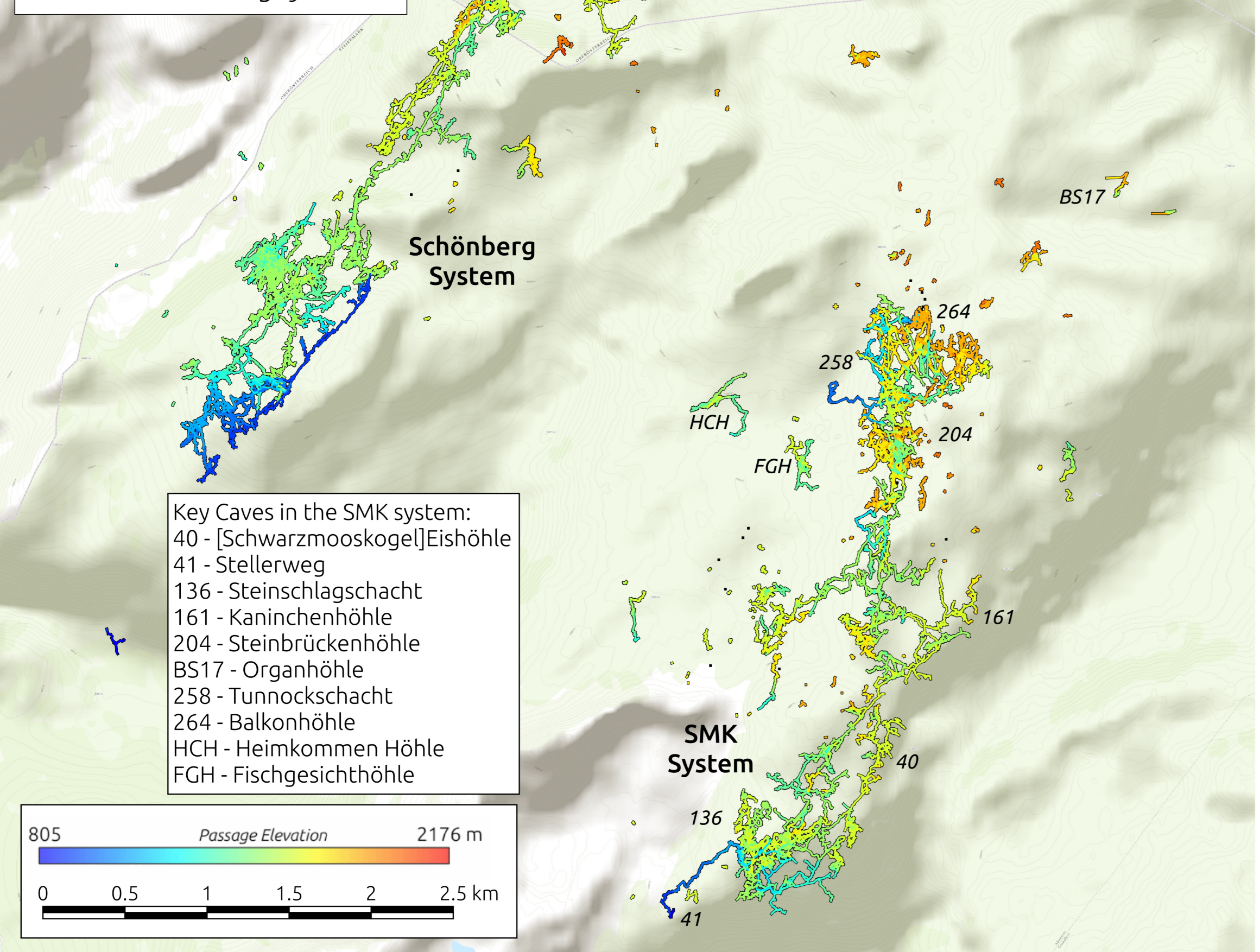


# Selected surveys from the Schwarzmooskogel (SMK) System

Prepared and published September 2019 by CUCC expedition using survey data from CUCC Expedition (SMK system) and, with thanks, from Landesverein für Höhlenkunde (Schönberg system). Elevation data derived from best available sources. All photos are taken by members of CUCC Expedition and are used with much gratefulness, many thanks also go to CUCC's sponsors over the years, the family of Gasthof Staud'nwirt and Verein für Höhlenkunde in Obersteier.

1:25000 - Buffered centreline data coloured by passage elevation - SMK and Schönberg Systems

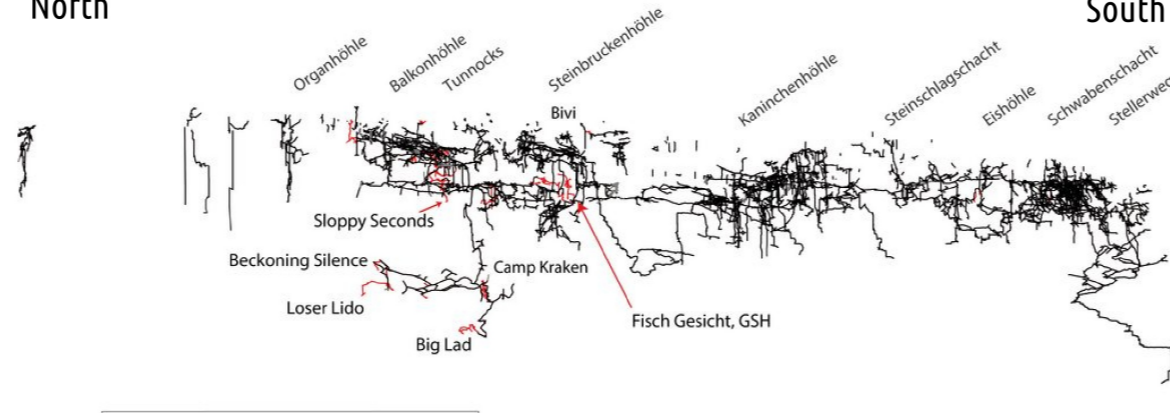


The annual CUCC expedition to Austria focuses on new exploration in the high alpine karst of the Loser plateau (about 80km E of Salzburg). The Schwarzmooskogel (SMK) system, within this area, is formed by the linkage of several caves into one system, ~150km long, and over 1km deep. Recent focuses for exploration include:

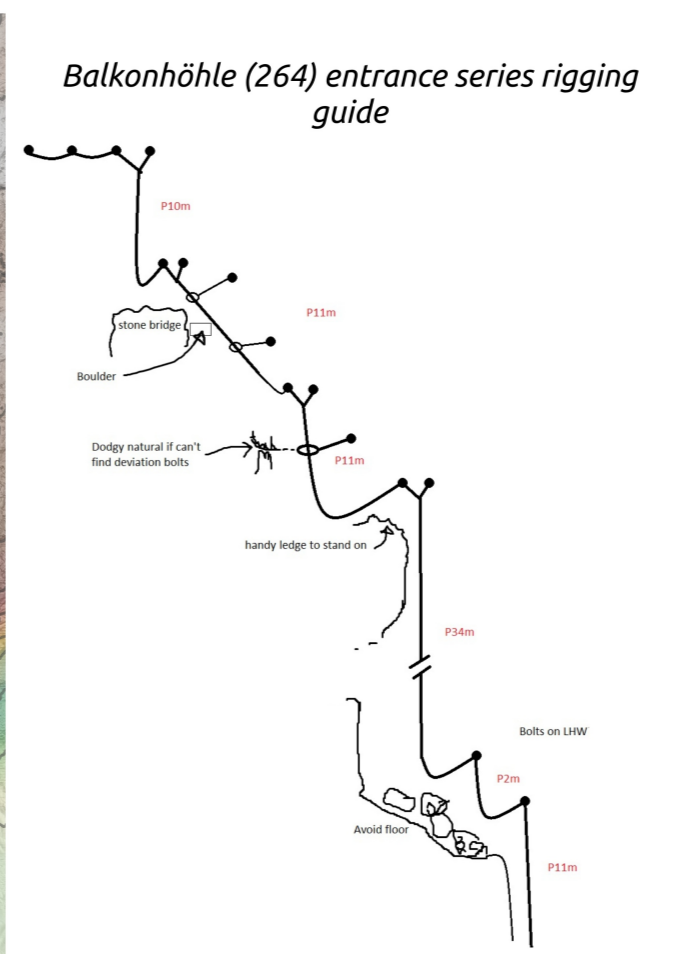
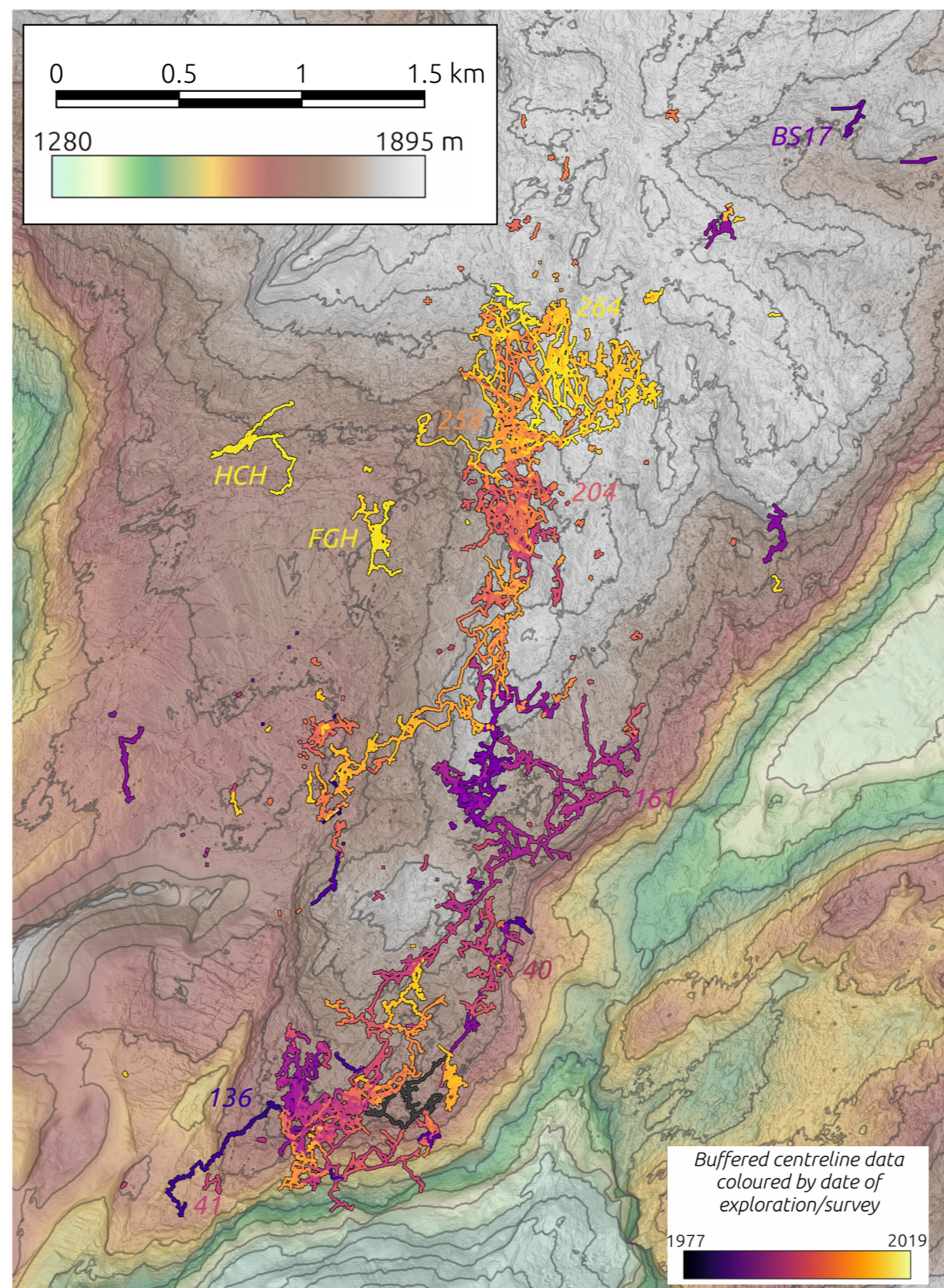
- Steinbrückenhöhle (Stonebridge hole - 204) the major cave in the area and the principal focus of CUCC's work from 2000-2008.
- Tunnockschacht (258) and Balkonhöhle (264) have been the major focus of exploration since 2016. In 2018 they both went deep and three connections between them were made.
- Fischgesichthöhle (FGH) and Gluklischesmetterlinghöhle (Happy Butterfly) were discovered in 2017 and despite being only a few metres apart they have not yet been connected. FGH has gone deep but was snow-plugged in 2019.
- Heimkommenhöhle (Homecoming - HCH), discovered in 2018, is on the edge of CUCC's area but long-term could lead to connections into the neighbouring Schönberg system.



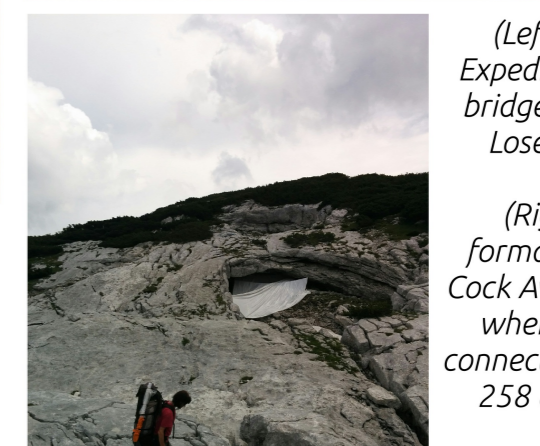
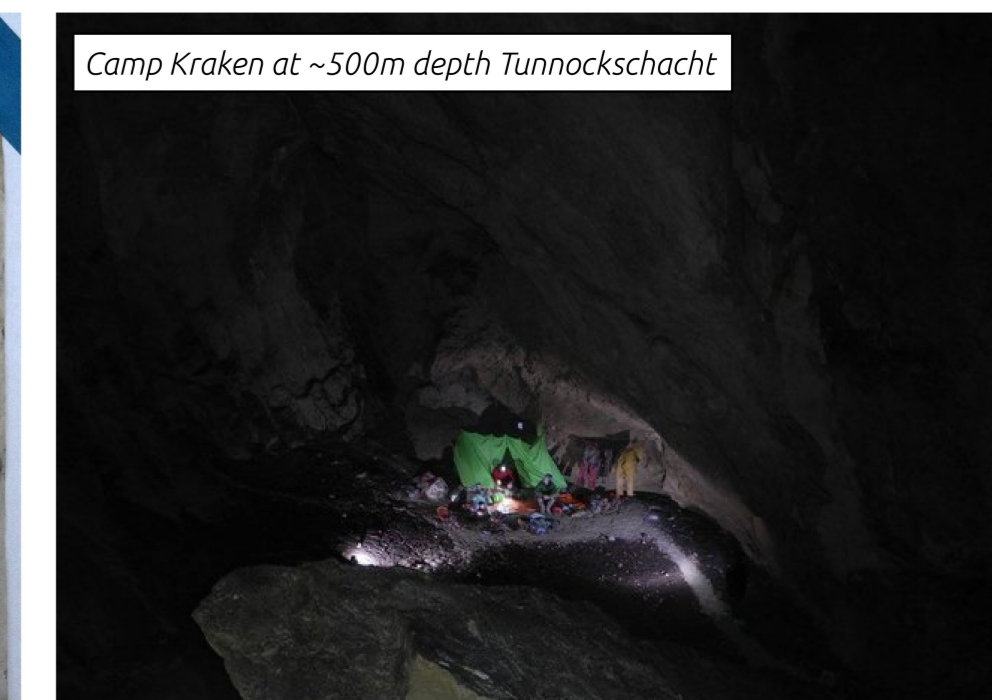
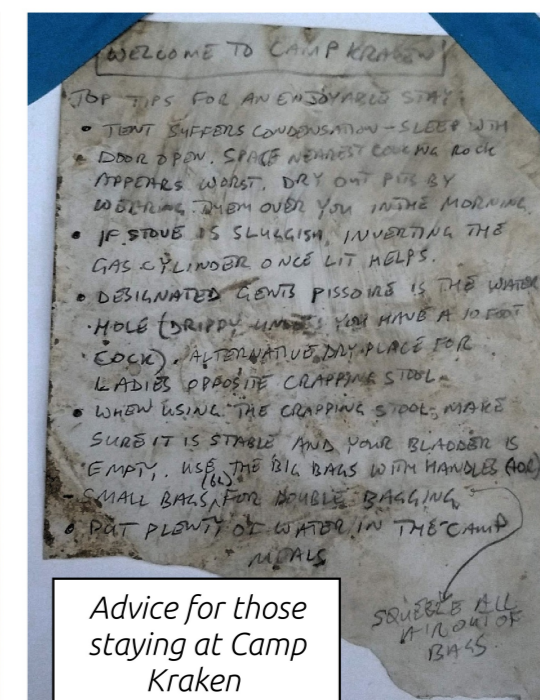
View from Tunnockschacht col across the plateau to Balkonhöhle (pictured in inset) - photo Mike Futrell



Caves of the Loser Plateau  
 2017 finds in red  
 Look direction: East  
 Schematic cross-section of the SMK system and outlying caves



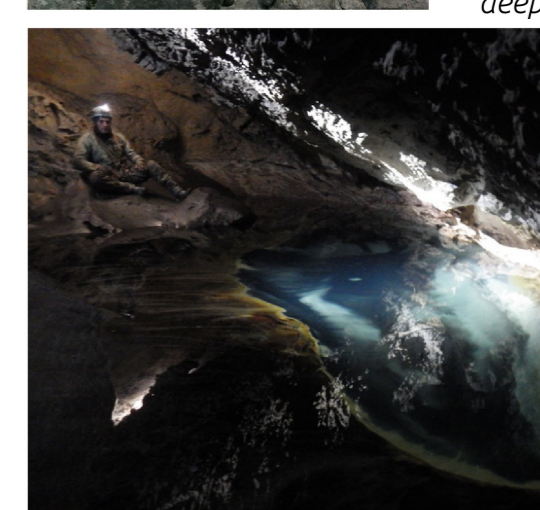
Ice plug at base of Tunnocks entrance series - Photo Mike Futrell



(Left) - CUCC Expedition's stone bridge bivouac on the Loser Plateau



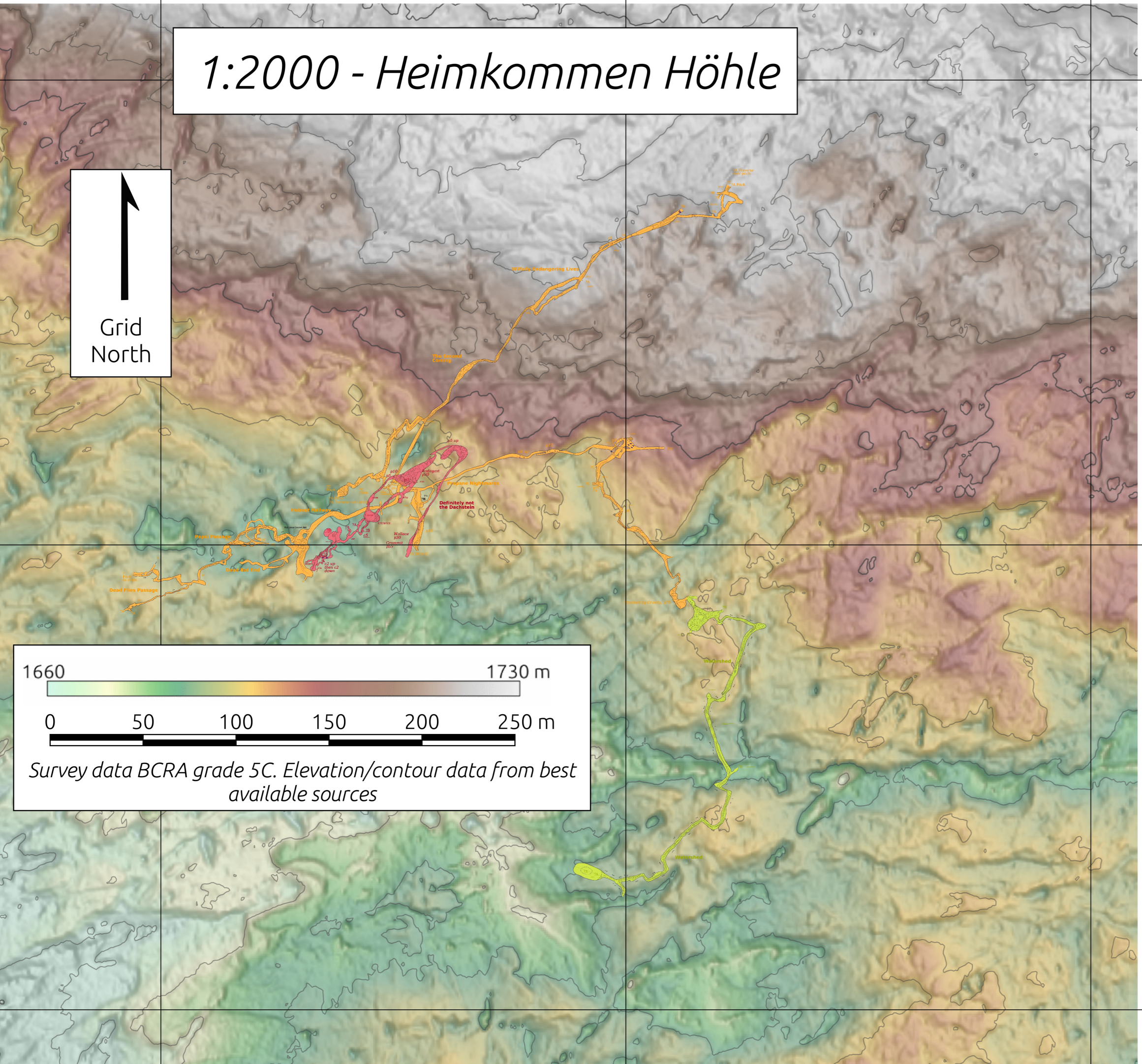
(Right) - Ice formations in ice cave area, the area where the first connection between 258 & 264 was made



(Below) - Sump in deep Tunnocks



Leads in Medusa's Maze (Balkonhöhle) pushed in 2019 going North and West - photos Harry Kettle

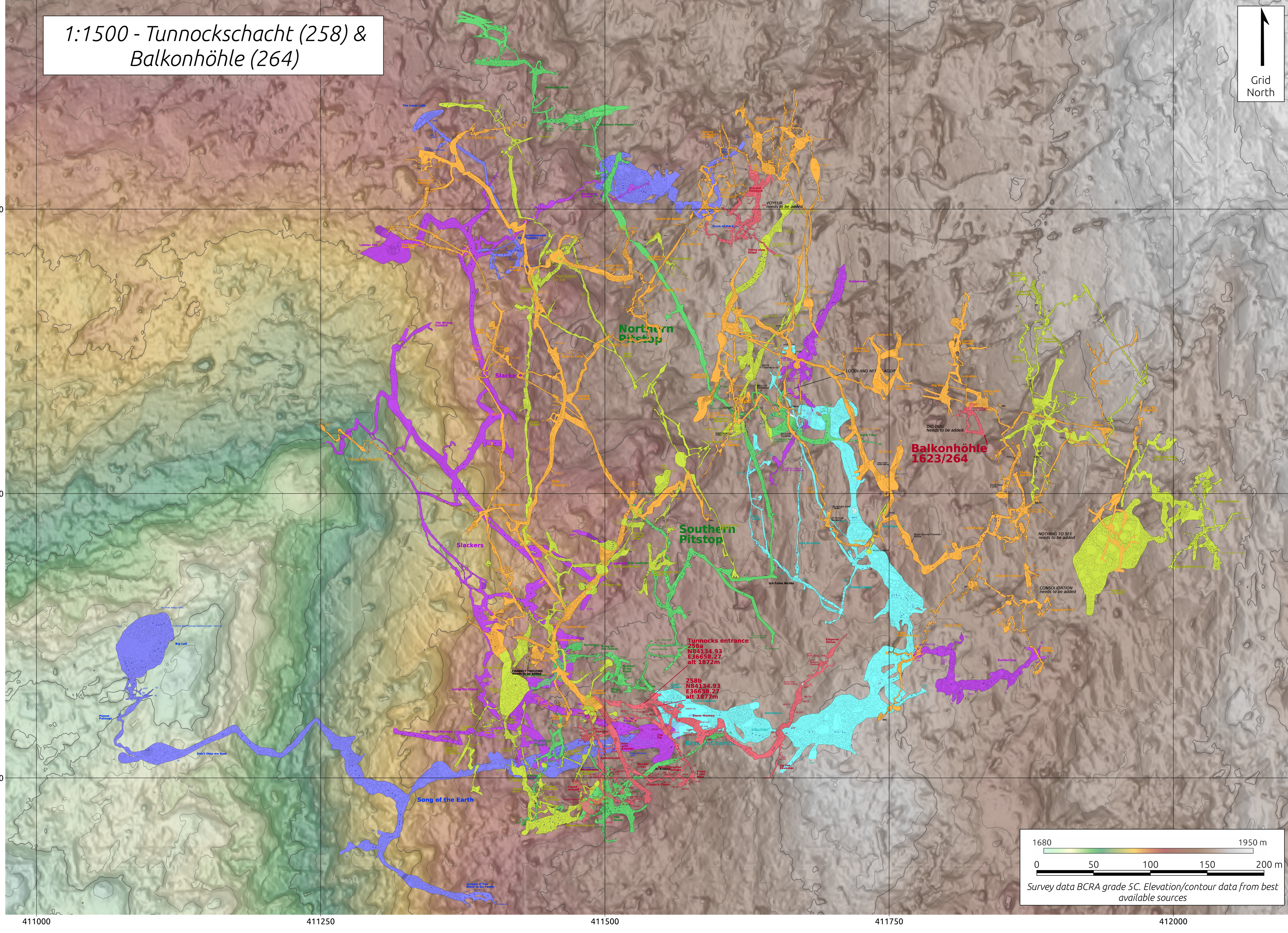


Classic keyhole passage in Heimkommen Höhle  
 Heimkommen Höhle is unusually well decorated for a cave in the SMK system  
 Heimkommen Höhle entrance climbs/pitches

2018-07-13  
 Jon Arne Toft, Dickon Morris  
 CUCC2018 DM07 (Homecoming Hole) - First push

Headed off to drop DM07 followed by DM06. Started with DM07 as the closer of the two. First pitch/handle 5m down from surface to large hole in ground. Into hole in wall, 1m down and 2m traverse over a drop of 3m leads to top of snow plug that can be followed down 8m to passage. Crawl for 10m leads to first pitch, 5m, closely followed by longer pitch (10m) into a rather large chamber. The way leading back against the direction of progress quickly chokes. Way on leads to large boulder. A hole on the left side yields a safe continuation (the rope also leads this way) on to the next pitch of another 10m into yet another chamber. From here, an impressive pitch was observed (8m diameter) which a 27m rope was insufficient to descend. Probably 40m deep. Strong draft, predicted by the majority of CUCC to be larger than Tunnocks [citation needed].

Surveyed out of cave, tag left on small shelf right under surface level. Lack of pencils led to ditching of DM06, though this is an interesting cave. DM06 still unexplored.  
 Jon sprained ankle before cave entrance, the effects of which showed up shortly after arrival to top camp, and which subsided by the next day. Strange stuff which unfortunately led to me being unable to push further the next day. :-)



411000 411250 411500 411750 412000